

**HELI**  
LIFTING THE FUTURE

## PRODUCTS RANGE



### General Description of the Company

Anhui Forklift Group Co., Ltd. (hereinafter referred to as AFG) is a state-owned company of Anhui Province. It was established in 1958. With the research and development, manufacturing and sale of industrial vehicles, construction machineries and their key parts as its main business. It is presently the largest industrial vehicle research and development, manufacturing and export base in China with the most complete product line and industrial chain. According to the "Top 20 Industrial lift truck suppliers" released by MMH, AFG ranked NO.7 among the world in 2018.

Anhui Heli Co., Ltd., a core holding subsidiary of AFG, comes into the stock market at Shanghai Stock Exchange Center in 1996 (Stock Code: Anhui Heli 600761).

AFG is a national innovative enterprise, a key high-tech enterprise of the National Torch Plan, and its technical center was honored as the first level & the only national technical center among Chinese forklift enterprises. The brand "HELI" is a famous Chinese trademark. Its main products have achieved European CE Safety Certification, the US EPA environmental protection certification and system certifications of ISO9001, ISO14001 and OHSAS18001.



#### ANHUI HELI CO., LTD.

ADD: NO. 688 Fangxing Street, Economic  
Development Zone, Hefei, P.R. China  
TEL: (86 551) 63639068 (America); 63639258 (Europe); 63639358 (Asia); 63662105 (Africa & Middle East);  
63639530 (Key Accounts Division); 63639531 (Wheel loader)  
FAX: (86 551) 63639966  
WEBSITE: <http://www.heliforklift.net>

Catalog No. 190510 Forklift Print

## 5 Warehouse truck

### Pallet truck

#### >> CBD15-170

- Capacity 1500kg
- Fork length 1150/1200mm
- Fork width 160mm
- 24V/75Ah/85Ah
- DC Controller
- Option:  
Fork lowered height 75mm



#### >> CBD15J-Li

- Capacity 1500kg
- Fork length 1150mm
- Fork width 150mm
- 24V/35Ah
- DC Controller
- Lithium battery



#### >> CBD15-610

- Capacity 1500kg
- Fork length 1150/1200mm
- Fork width 160mm
- 24V/85Ah
- DC Controller
- Option:  
Fork lowered height 75mm



#### >> CBD18/20-180

- Capacity 1800/2000kg
- Fork length 1150/1200mm
- Fork width 150mm
- 24V/210Ah
- AC Controller



#### >> CBD20J

- Capacity 2000kg
- Fork length 1150mm
- Fork width 160mm
- 24V/100Ah
- DC Controller



#### >> CBD20-150

- Capacity 2000kg
- Fork length 1150/1200mm
- Fork width 170mm
- 24V/210Ah
- AC Controller
- Option:  
Fork lowered height 75mm



#### >> CBD20-410

- Capacity 2000kg
- Fork length 1150/1200mm
- Fork width 170mm
- 24V/210Ah
- AC Controller
- Rider



#### >> CBD20/25/28/30-460/470

- Capacity 2000/2500/2800/3000kg
- Fork length 1150/1200mm
- Fork width 170mm
- 24V/270Ah/280Ah
- AC Controller
- Rider



#### >> CBD20-490

- Capacity 2000kg
- Fork length 1150/1200mm
- Fork width 170mm
- 24V/280Ah
- AC Controller
- Rider



#### >> CBD35-510/520/530

- Capacity 3500kg
- Fork length 2432mm
- /1212-1517mm
- Fork width 250mm/230mm
- 24V/360Ah
- AC Controller
- Rider
- Option: walkie



[www.heliforklift.net](http://www.heliforklift.net)

### Stacker

#### ① Fork over

##### >> CBS10/15/20J

- Capacity 1000kg
- lift height 1600mm(single stage) - 2000-3500mm
- 12V/120Ah
- DC Controller
- Semi-electric



##### >> CDD12-060

- Capacity 1200kg
- lift height 2000-3600mm
- 24V/210Ah
- DC Controller



##### >> CDD10-070

- Capacity 1000kg
- lift height 2000-3300mm
- 24V/85Ah
- DC Controller



##### >> CDD10-080

- Capacity 1000kg
- lift height 1600/1950mm
- 24V/85Ah
- DC Controller



##### >> CDD12J (D) CDD15J

- Capacity 1200/1500kg
- lift height 1600mm(Mono mast) - 2000-3500mm
- 24V/100Ah
- DC Controller



##### >> CDD12/14

- Capacity 1200/1400kg
- lift height 1400-4000mm
- 24V/210Ah/280Ah
- AC Controller



##### >> CDD16/20

- Capacity 1600/2000kg
- lift height 1400-5000mm
- 24V/280Ah
- AC Controller



##### >> CDD16/20J

- Capacity 1600/2000kg
- lift height 1600mm(single stage) - 2000-3500mm
- 24V/100Ah/210Ah
- AC Controller



#### ② Straddle

##### >> CBS10/15/20JK

- Capacity 1000kg
- lift height 1600mm(single stage) - 2000-3500mm
- 12V/120Ah
- DC Controller
- Semi-electric



##### >> CTD10-050

- Capacity 1000kg
- lift height 2000-3300mm
- 24V/85Ah
- DC Controller



##### >> CTD10-090

- Capacity 1000kg
- lift height 1600/1950mm
- 24V/85Ah
- DC Controller



##### >> CDD12/15J

- Capacity 1200/1500kg
- lift height 1600mm(single stage) - 2000-3500mm
- 24V/280Ah
- DC Controller



##### >> CTD14/16/20

- Capacity 1400/1600/2000kg
- lift height 1400-4000mm
- 24V/280Ah
- AC Controller
- Standard 2-stage



##### >> CTD16/20

- Capacity 1600/2000kg
- lift height 3700-5800mm
- 24V/280Ah
- AC Controller
- Full free 3-stage



##### >> CTD16-960H

- Capacity 1600kg
- lift height 3700-5000mm
- 24V/270Ah
- AC Controller



##### >> CDD16/20JK

- Capacity 1600/2000kg
- lift height 1600mm(single stage) - 2000-3500mm
- 24V/100Ah/210Ah
- AC Controller



#### ③ Counterbalanced

##### >> CPD06-970

- Capacity 600kg
- Standard 2-stage
- lift height 1400-3300mm
- 24V/270Ah
- AC Controller



##### >> CPD12-970/910

- Capacity 1200kg
- Standard 2-stage
- lift height 1400-3600mm
- /2500-3300mm
- 24V/270Ah
- AC Controller



##### >> CPD16-(D)970

- Capacity 1600kg
- Standard 2-stage
- lift height 1400-4000mm
- /3700-4500mm
- 24V/270Ah
- AC Controller



[www.heliforklift.net](http://www.heliforklift.net)



# 1 Forklift truck

## Internal combustion

### >> G Series 1-3.5t CPCD10-35

- Capacity 1000-3500kg
- Lifting height 3000mm
- Max.lifting heighe 6000mm
- Load center 500mm
- Diesel



### >> G Series 5-7t CPCD50-70

- Capacity 5000-7000kg
- Lifting height 3000mm
- Max.lifting heighe 7000mm
- Load center 500mm
- Diesel



### >> G Series 8.5-10t CPCD85-100

- Capacity 8500-10000kg
- Lifting height 3000mm
- Max.lifting heighe 7000mm
- Load center 500mm
- Diesel



### >> G2 Series 2-3.5t CPCD20-35

- Capacity 2000-3500kg
- Lifting height 3000mm
- Max.lifting heighe 6000mm
- Load center 500mm
- Diesel



### >> G Series 1-3.5t CPQ(V)D10-35

- Capacity 1000-3500kg
- Lifting height 3000mm
- Max.lifting heighe 6000mm
- Load center 500mm
- LPG/Gasoline



### >> G Series 5-7t CPQ(V)D50-70

- Capacity 5000-7000kg
- Lifting height 3000mm
- Max.lifting heighe 7000mm
- Load center 500mm
- LPG/Gasoline



### >> H3 series 1-3.5t CPCD20-35

- Capacity 1000-3500kg
- Lifting height 3000mm
- Max.lifting heighe 6000mm
- Load center 500mm
- Diesel



### >> H3 series 4-5t CPCD40-50

- Capacity 4000-5000kg
- Lifting height 3000mm
- Max.lifting heighe 6000mm
- Load center 600mm
- Diesel



### >> H3 series 1-3.5t CPYD10-35

- Capacity 2000-3500kg
- Lifting height 3000mm
- Max.lifting heighe 6000mm
- Load center 500mm
- LPG



### >> H3 series 2-3.2t CP(Q)YD20-32C

- Capacity 1815-2950kg
- Lifting height 4700mm
- Max.lifting heighe 7500mm
- Load center 600mm
- Cushion tire
- LPG/Gasoline



### >> H2000 series 1-3.5t CPC(D)10-35

- Capacity 1000-3500kg
- Lifting height 3000mm
- Max.lifting heighe 7000mm
- Load center 500mm
- Diesel



### >> H2000 series 5-10t CPCD50-100

- Capacity 5000-10000kg
- Lifting height 3000mm
- Max.lifting heighe 7000mm
- Load center 600mm
- Diesel



### >> H series 4-5t CPC(D)40-50

- Capacity 4000-5000kg
- Lifting height 3000mm
- Max.lifting heighe 7000mm
- Load center 500mm
- Diesel



### >> H series 3-6t CCCD30-60

- Capacity 3000-6000kg
- Lifting height 3600mm
- Max.lifting heighe 6000mm
- Load center 600mm
- Diesel
- Side-loading forklift



### >> H2000 series 1-3.5t CPQ(V)D10-35

- Capacity 1000-3500kg
- Lifting height 3000mm
- Max.lifting heighe 7000mm
- Load center 500mm
- LPG/Gasoline



### >> H2000 series 4-5t CPQ(V)D40-50

- Capacity 4000-5000kg
- Lifting height 3000mm
- Max.lifting heighe 7000mm
- Load center 500mm
- LPG/Gasoline



# 2 Reach truck

## Stand-up

### >> G2 series 1.5-1.8t CQD15-18

- Capacity 1500-1800kg
- Lifting height 3100mm
- Max.lifting heighe 6500mm
- Load center 500mm
- 48V/345Ah/360Ah



### >> G2 series 1.6-1.8t CQD16-18X1

- Capacity 1600-1800kg
- Lifting height 5530mm
- Max.lifting heighe 7620mm
- Load center 600mm
- Scissor fork



### >> 1.2-1.5t CQDM12/15-810

- Capacity 1200-1500kg
- Standard 2-stage/Full free 3-stage
- Reach distance 425mm
- Lifting height 1400-4000mm
- 13700-45000mm
- 24v/280Ah



### >> 1.4t CQDH14-850

- Capacity 1400kg
- Standard 3-stage
- Reach distance 550mm
- Lifting height 3800-5500mm
- 24v/280Ah
- Scissor fork



## Electric

### ①Four-wheel

### >> G series 1-1.8t CPD10-18

- Capacity 1000-1800kg
- Lifting height 3000mm
- Max.lifting heighe 7000mm
- Load center 500mm
- 48V/400Ah/480Ah



### >> G series 2-2.5t CPD20-25

- Capacity 2000-2500kg
- Lifting height 3000mm
- Max.lifting heighe 7000mm
- Load center 500mm
- 48V/700Ah



### >> G series 3-3.5t CPD30-35

- Capacity 3000-3500kg
- Lifting height 3000mm
- Max.lifting heighe 7000mm
- Load center 500mm
- 80V/480Ah/560Ah



### >> G series 4-5t CPD40-50

- Capacity 4000-5000kg
- Lifting height 3000mm
- Max.lifting heighe 6000mm
- Load center 500mm
- 80V/600Ah/650Ah



### >> G series 8.5-10t CPD85-100

- Capacity 8500-10000kg
- Lifting height 3000mm
- Max.lifting heighe 8000mm
- Load center 600mm
- 80V/1120Ah/1240Ah



### >> Gseries 1-3.5t CPD10-35

- Capacity 1000-3500kg
- Lifting height 3000mm
- Max.lifting heighe 7000mm
- Load center 500mm
- 48V/400Ah/540Ah
- 80V/400Ah



### >> G series 2-2.5t CPD20-25C

- Capacity 2000-2500kg
- Lifting height 4700mm
- Max.lifting heighe 7500mm
- Load center 500mm
- 36V/1320Ah/1540Ah
- 48V/990Ah/1100Ah



### >> G series 3-3.2t CPD30-32C

- Capacity 3000-3200kg
- Lifting height 4700mm
- Max.lifting heighe 7500mm
- Load center 500mm
- 36V/1540Ah
- 48V/1100Ah



### >> H3 series 1-1.8t CPD10-18

- Capacity 1000-1800kg
- Lifting height 3000mm
- Max.lifting heighe 7000mm
- Load center 500mm
- 48V/400Ah/480Ah



### >> H3 series 2-2.5t CPD20-25

- Capacity 2000-2500kg
- Lifting height 3000mm
- Max.lifting heighe 7000mm
- Load center 500mm
- 48V/600Ah



### >> H series 6-7t CPD60-70

- Capacity 6000-7000kg
- Lifting height 3000mm
- Max.lifting heighe 7000mm
- Load center 600mm
- 80V/800Ah/920Ah



### >> EFG 1.6-2t EFG 316/320n

- Capacity 1600-2000kg
- Lifting height 3000mm
- Max.lifting heighe 6500mm
- Load center 500mm
- 48V/750Ah



### ②Three wheel

### >> G series 1.25-1.5t CPD13/15SH

- Capacity 1250-1500kg
- Lifting height 3000mm
- Max.lifting heighe 6500mm
- Load center 500mm
- 24V/630Ah/720Ah
- Rear Drive



### >> G2 series 1.5-2t CPD15/20SQ

- Capacity 1500-2000kg
- Lifting height 3300mm
- Max.lifting heighe 6500mm
- Load center 500mm
- 48V/440Ah/600Ah/720Ah



### >> G2 series 1.5-2t CPD15/20SQ

- Capacity 1500-2000kg
- Lifting height 3300mm
- Max.lifting heighe 6500mm
- Load center 600mm
- Stand-up



### >> EFG 1.6t EFG 216kn

- Capacity 1600kg
- Lifting height 3000mm
- Max.lifting heighe 6500mm
- Load center 500mm
- 48V/625Ah



# 3 Heavy Vehicle

## Big Truck

### >> CPCD120-160

- Capacity 12000-16000kg
- Load center 600 (900) mm
- Max.lifting height 6500mm
- Lift height 3000mm
- Diesel



### >> CPCD140-180

- Capacity 14000-18000kg
- Load center 1200mm
- Max.lifting height 6500mm
- Lift height 3000mm
- Diesel



### >> CPCD200-250

- Capacity 20000-25000kg
- Load center 1200mm
- Max.lifting height 8000mm
- Lift height 4000mm
- Diesel



### >> CPCD280-320

- Capacity 28000-32000kg
- Load center 1200mm
- Max.lifting height 8000mm
- Lift height 4000mm
- Diesel



### >> CPCD420-460

- Capacity 42000-46000kg
- Load center 1200mm
- Max.lifting height 8000mm
- Lift height 4000mm
- Diesel



# 4 Tow tractor

## Internal combustion

### >> G series QYCD20-30

- Max drawbar pull 2000-3000N
- Max travel speed 24-30km/h
- Diesel/Gasoline



### >> G series QYCD20-35

- Max drawbar pull 3000-3500N
- Max travel speed 26km/h
- Diesel



### >> G series QYCD40-50

- Max drawbar pull 4000-5000N
- Max travel speed 23km/h
- Diesel



### >> G series QYCD40-80

- Max drawbar pull 6000-8000N
- Max travel speed 30km/h
- Diesel



### >> H2000 series QYCD35-50

- Max drawbar pull 3500-5000N
- Max travel speed 24km/h
- Diesel



### >> H2000 series TCP5-800

- Capacity 500-8000kg
- Hooking height 450mm(Adjustable)
- Platform Trailer



## Electric

### >> QYD20/30/45S

- Capacity 2000-4500kg
- Travel speed 7/6km/h
- 24V/210Ah/280Ah/430Ah



### >> QYD15/20/30/40/50/60S

- Capacity 1500-6000kg
- Travel speed 9/10km/h
- 24V/280Ah/350Ah
- 48V/280Ah/350Ah
- 380Ah/420Ah



### >> QYD50/60/70/100

- Capacity 5000-10000kg
- Travel speed 10/14/17km/h
- 48V/480Ah/520Ah/600Ah
- 420Ah/520Ah



### >> QYD80/100/120/150/200/250

- Capacity 8000-25000kg
- Travel speed 12/11/10km/h
- 48V/480Ah/520Ah/600Ah
- 80V/500Ah/650Ah/750Ah



### >> QYD200/250/300-A11i

- Capacity 20000-30000kg
- Travel speed 14/12/11km/h
- 80V/500Ah/600Ah
- Lithium battery



### >>BD10-50

- Capacity 1000-5000kg
- CURTIS Controller
- Option:Lithium battery



### >>BD150-300

- Capacity 15000-30000kg
- CURTIS Controller





## HELI H3 SERIES - NISSAN POWERED - INTERNAL COMBUSTION 2500kg COUNTERBALANCED CONTAINER MAST FORKLIFT TRUCKS HI-EFFICIENT, ENERGY SAVING PERFORMANCE

The HELI H3 series is designed and manufactured with Australian conditions in mind. The HELI 1500-2500kg H3 series forklift trucks provide high productivity and reliability at an economical price, with, reduced overall running cost. HELI forklift trucks meet AS2359.1:2015, the Australian Standard for Industrial Trucks.

The HELI H3 Series constant product development and innovations provide operators a comfortable, efficient and environment friendly forklift. The outstanding noise levels, safety and reliability are key features along with easy cost effective maintenance and exceptional working efficiency.



### Environmentally friendly

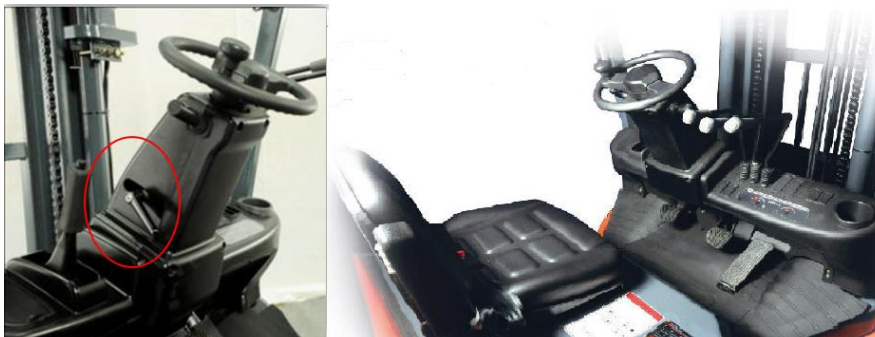
The clean and environmentally friendly operation of the HELI H3 Forklift series exceeds international emission standards and is designed to reduce harmful gases.

### Superb working efficiency

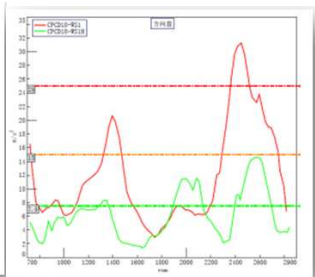
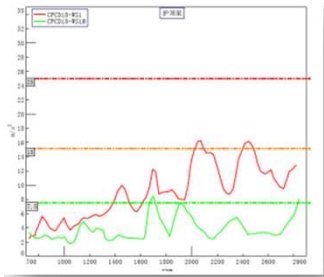
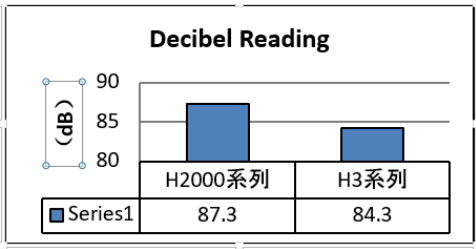
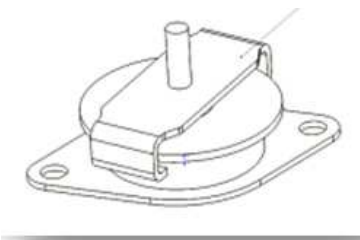
The HELI H3's high efficiency guarantees its materials handling ability will meet the requirements of heavy work applications.



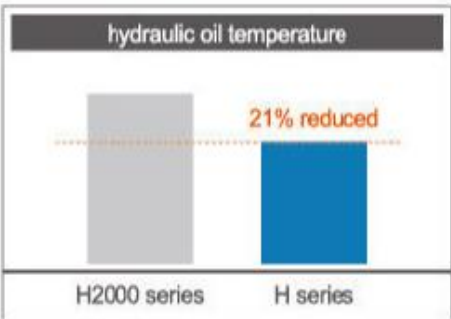
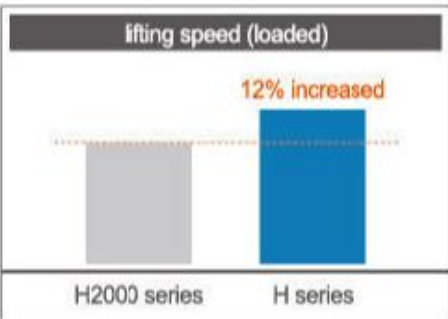
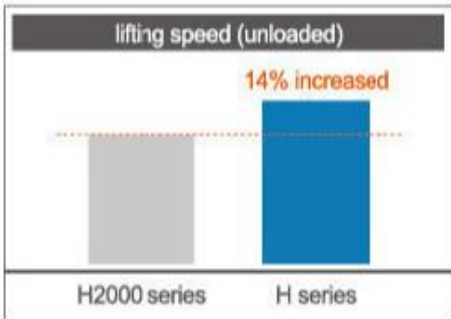
With a low centre of gravity, HELI forklift trucks overall stability are improved and are more stable during loading, unloading, and travelling. Small diameter steering wheel with 100% pivot steering and return provides a small turning radius, giving great manoeuvrability and reducing operator fatigue. Well positioned, easy to read instrument panel, large leg room, drink holder, document clip, adjustable steering column, entry handle, rear pillar handle with horn button, rubber floor mat are all features that improve operational ease.



The HELI H3 is equipped with shock absorption between the frame and the cabin of the forklift truck isolates the operator from vibration. The suspended foot pedals isolate the vibration transmitted from the chassis to the operator. Double lip seal around the hood and sealed floor plate isolates noise from the operator.



The constant load sensing of the steering system increases lifting speed, reduces hydraulic oil temperature, improves working efficiency and extends service life of hydraulic components. The lifting speed without load is improved by 14%, and lifting speed with load is improved by 12%, the hydraulic oil temperature is reduced by 21%.





## Ergonomics

The H3 leg room is maximised by locating the tilt cylinders under the floor plate 45% increasing operators' floor space by 45%. Wide open, low, nonslip entry step improves ease and safety when entering and exiting the forklift. The fully adjustable, suspension seat with armrest and OPS is designed to suit different operators' needs.



■ hidden tilting cylinder



■ comfortable space



## Operational safety

A mast buffering system reduces shock when lowering the mast and reduces noise caused by lowering the load quickly to the ground.



■ lowering buffering device

The 30mm increased wider view through the 3 stage mast combined with the lowered dash board significantly improves visibility of the load being handled. While the counterweight shape is designed to improve the rear view and the rear pillar operator grip with horn improves safety and comfort by offering safer option for placement of operators hand when reversing.



■ visibility at the fork tip and goods 20mm increased

The radiator heat flow baffle is bolted to the frame for ease of removal without removing the counterweight.

Engine and transmission cooling has been improved with the counterweight channel design, aluminium plate-fin type radiator, 68mm clearance between muffler and radiator to optimize thermal dissipation, which improves cooling ability and ensures engine reliability even under the harshest conditions.



LED headlights and high mount LED rear combination lights give increased illumination and energy savings. LED lights are very reliable, long lasting and reduce the incidence of lamp failure significantly extending the life of the lights.



## Ease of maintenance

Ease of access for service is an important factor maintaining the optimal condition of key components and the forklift overall. This ensures quick access and safety when carrying out daily checks which assists in increasing productivity.

The 80° engine hood opening angle, and a gas strut, hood lock incorporated into the hood enables easy opening and closing for checks and maintenance.



Floor plates are easily removed and replaced making it easy to maintain engine and transmission.

Easily applied ratchet style handbrake lever, within easy reach of the operator.



Brake fluid reservoir is conveniently located in the operators' compartment allowing easy access for maintaining correct fluid level.



▪ brake liquid reservoir



## Limited time offer

2.5t Triple Stage 4500mm container Mast, LPG Powered, Side Shift, Puncture Proof Tyres,

**\$23,990.00 plus GST**

The logo for the South North West Football Federation (SNWF) is displayed in a large, bold, blue serif font. The letters are slightly shadowed, giving them a three-dimensional appearance.

For information on the comprehensive range of Materials Handling Equipment supplied by the HELI Corporation please feel free to contact us at Statewide Forklifts Pty Ltd.

**gwildler@statewideforklifts.com.au    info@statewideforklifts.com.au**

**0404 333 432                      0414 720 456**



# Statewide Forklifts Pty Ltd

[www.statewideforklifts.com.au](http://www.statewideforklifts.com.au)

ABN: 70 090 061 091

*Sales – Hire – Service*

Head Office: Unit 3/8 Purdy St, Minchinbury NSW

**Phone 1300 883 500 Aust Wide**