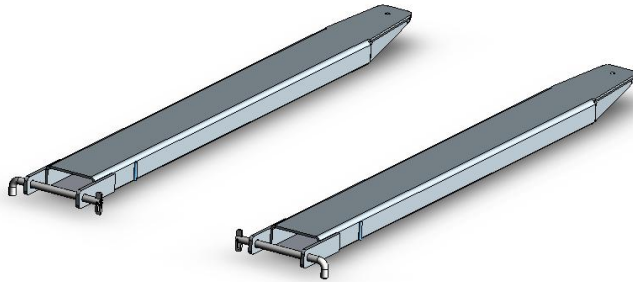


Fork Extension Slippers

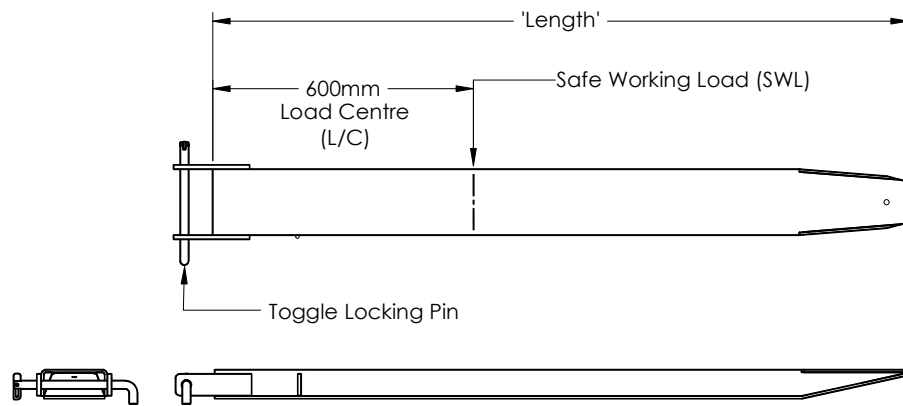
These types of Fork Extension Slippers have been designed with a slim profile to extend the versatility of your Lift Truck.

In accordance with AS2359.15 Slippers used for general usage should be no longer than 167% of the supporting Tine's length. If the Slippers are longer than 167%, then the usage of those Slippers shall be restricted to their specified application.



SPECIFICATIONS:

- Made of High Tensile Grade Steel
- Zinc Plated for added Protection
- High Safe Working Load (SWL) Rating
- Supplied with Toggle Locking Pins
- Fitted with Rating Plate



| Type | Suit Fork Size (mm) | Length (mm) | Capacity (kg) | Plate Thickness | Weight (kg/pair) |
|-----------|---------------------|-------------|---------------|-----------------|------------------|
| F-HCT1-16 | 100 x 40 | 1600 | 2500 | 5 mm | 40.5 |
| F-HCT1-18 | 100 x 40 | 1800 | 2500 | 5 mm | 46 |
| F-HCT1-20 | 100 x 40 | 2000 | 2500 | 5 mm | 51.5 |
| F-HCT1-22 | 100 x 40 | 2200 | 2500 | 5 mm | 57 |
| F-HCT1-24 | 100 x 40 | 2400 | 2500 | 5 mm | 62.5 |

| | | | | | |
|-----------|----------|------|------|------|----|
| F-HCT2-16 | 120 x 40 | 1600 | 3000 | 5 mm | 46 |
| F-HCT2-18 | 120 x 40 | 1800 | 3000 | 5 mm | 51 |
| F-HCT2-20 | 120 x 40 | 2000 | 3000 | 5 mm | 56 |
| F-HCT2-22 | 120 x 40 | 2200 | 3000 | 5 mm | 61 |
| F-HCT2-24 | 120 x 40 | 2400 | 3000 | 5 mm | 66 |

| | | | | | |
|-----------|----------|------|------|------|-----|
| F-HCT3-18 | 125 x 50 | 1800 | 4000 | 6 mm | 66 |
| F-HCT3-20 | 125 x 50 | 2000 | 4000 | 6 mm | 73 |
| F-HCT3-22 | 125 x 50 | 2200 | 4000 | 6 mm | 80 |
| F-HCT3-24 | 125 x 50 | 2400 | 4000 | 6 mm | 87 |
| F-HCT3-30 | 125 x 50 | 3000 | 4000 | 6 mm | 108 |

| | | | | | |
|-----------|----------|------|------|------|-----|
| F-HCT4-18 | 150 x 60 | 1800 | 7000 | 8 mm | 104 |
| F-HCT4-20 | 150 x 60 | 2000 | 7000 | 8 mm | 116 |
| F-HCT4-22 | 150 x 60 | 2200 | 7000 | 8 mm | 128 |
| F-HCT4-24 | 150 x 60 | 2400 | 7000 | 8 mm | 140 |
| F-HCT4-30 | 150 x 60 | 3000 | 7000 | 8 mm | 176 |